

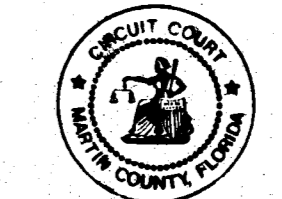
UNINCORPORATED MARTIN COUNTY

AMENDED PLAT OF PALM CITY  
P.B. 6, PG. 41  
(PALM BEACH COUNTY RECORDS)

This right of way map when recorded is an instrument of conveyance, transferring in accordance with the Florida Statutes 337.29, all right, title, and interest in the road, street, or highway shown herein, from the Florida Department of Transportation to Martin County.

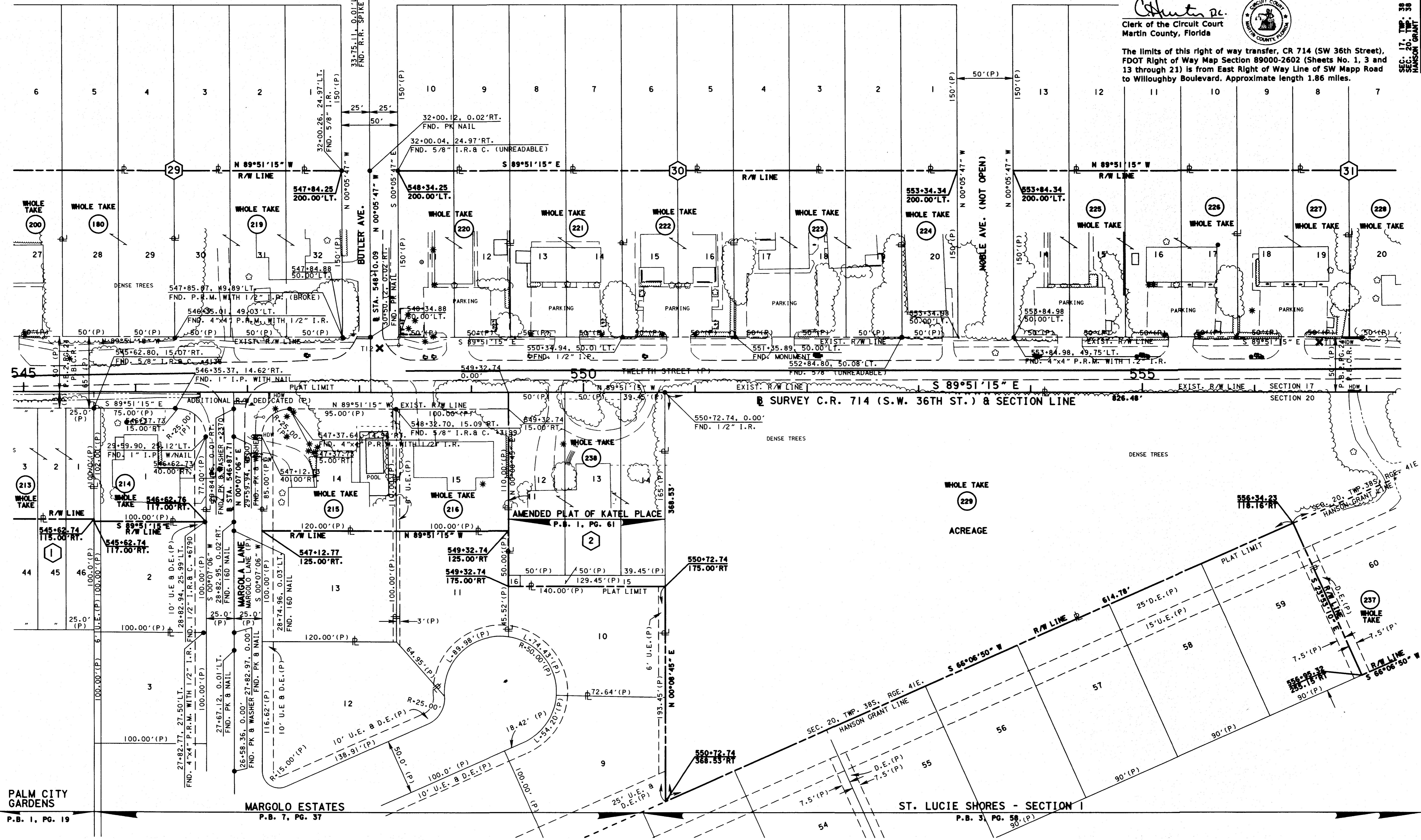
Recorded in Public Records of Martin County, Florida, this 11<sup>th</sup> day of April, A.D. 2014, in Road Plat Book 17, Page 23.

*Chuter Jr.*  
Clerk of the Circuit Court  
Martin County, Florida



The limits of this right of way transfer, CR 714 (SW 36th Street), FDOT Right of Way Map Section 89000-2602 (Sheets No. 1, 3 and 13 through 21) is from East Right of Way Line of SW Mapp Road to Willoughby Boulevard. Approximate length 1.86 miles.

SEC. 17, TWP. 38 S., RGE. 41 E.  
SEC. 20, TWP. 38 S., RGE. 41 E.  
HANSON GRANT  
SCALE: 1" = 40'



PALM CITY GARDENS  
P.B. 1, PG. 19

MARGOLO ESTATES  
P.B. 7, PG. 37

UNINCORPORATED MARTIN COUNTY

SEE SHEET ONE FOR LEGEND AND GENERAL NOTES

NOT A SURVEY

C.R. 714 (S.W. MARTIN HWY.)  
FROM THE FLORIDA TURNPIKE TO S.E. WILLOUGHBY BLVD.

RIGHT OF WAY MAP

FLORIDA DEPARTMENT OF TRANSPORTATION  
RIGHT OF WAY MAPPING

APPROVED BY  
*[Signature]*  
DATE  
2/23/09  
DISTRICT RIGHT OF WAY SURVEYOR

REVISION	BY	DATE	REVISION	BY	DATE

BY  
PRELIM DURYEA 04-12-02  
FINAL SANCHEZ 09-30-02  
CHECKED WILHELM 10-04-02

FED. PROJ. NO. SEE COVER SHEET  
SECTION 89000-2602  
COUNTY ROAD NO. 714  
MARTIN COUNTY

MAPS PREPARED BY  
KEITH & SCHNARS, P.A.  
W.P.I. No. N/A  
ITEM/SEGMENT No. 230978-1  
FIELD BOOK NO. 1  
SEE SHEET NO. 1  
SCALE: 1" = 40'  
SHEET 15 OF 26

time: rvmapping\2309781\rvd0115.dgn